

Deploy next generation wireless networks with Agilent's E6474A Wireless Network Optimization Platform



Challenges

- To cost effectively implement complex new networks and data services without impacting voice coverage and ahead of the competition.
- Find an accurate easy to use network optimization tool that covers 3G, 2.5G and 2G technologies, voice and data testing and outdoor and indoor environments.
- To have professional product and application support when required.

Solution

- Agilent E6474A Network Optimization Platform

Results

- Provides accurate measurements to optimize and troubleshoot your 2G/2.5G/3G wireless networks.
- Reduces costs with technology and application scalability on a single platform.
- Provides key end-to-end data quality of service measurements for optimization of data applications.
- Compatible with Actix Analyser, MapInfo and most major third party post-processing solutions to protect existing investments.
- Provides Agilent-reliable worldwide technical support.



Powerful and compact optimization solution

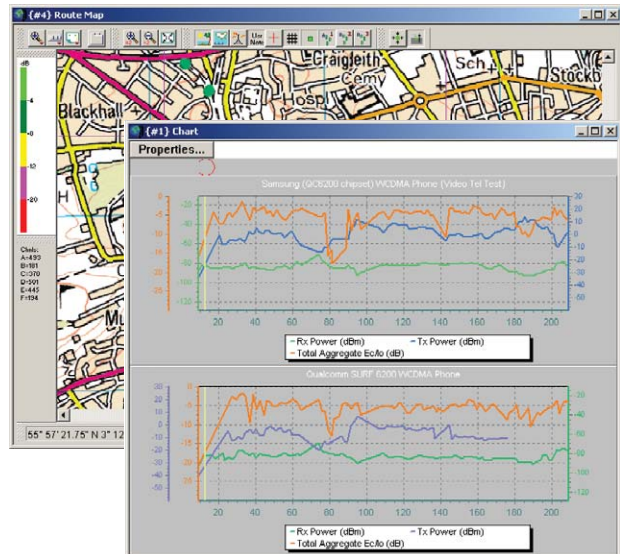
The Agilent E6474A platform provides a single solution to the optimization of your 2G, 2.5G and 3G networks and quickly and accurately enables identification of air-interface problem areas.

Accurate, reliable measurements

- Offers specialized receiver and test mobile measurements to allow optimization and troubleshooting of your wireless network.
- Provides fast and accurate parameter measurements for drive-time display and database capture.
- Enables flexible data export capability to easily transfer measurement results for detailed analysis.
- Provides comprehensive time chart, route map and alarm features for enhanced problem area visualization during test-time and at playback.
- Supports powerful data measurement software options to enable you to quantify quality of service from the wireless data users perspective.
- Minimizes training with easy-to-use Windows® based platform.

Extensible to grow with your needs

- Minimizes system costs and user complexity by supporting up to four Agilent receivers and four phones on single platform (varies by technology).
- Provides multi-vendor mobile support representing your customer's experience and providing interoperability validation (varies by technology).
- Speeds network turn-on by supporting new technologies quickly, including cdma2000, 1xEVDO, EDGE, UMTS and HSPDA (mobile and receiver).



The Agilent Wireless Network Optimization Platform speeds deployment of next-generation wireless networks.

Protects your investment

- Offers the ability to add receivers or mobiles as required for use across the wireless network lifecycle phases of site evaluation, base-station turn-on, system acceptance, on-going optimization, benchmarking and network expansion.
- Works with major third party post-processing packages to protect existing investments.
- Provides scalability between indoor and outdoor capability with the same user interface.

Multiple wireless system testing

Supports CDMA, GSM, TDMA, GAIT, iDEN, GPRS, EDGE, cdma2000, 1xEVDO, W-CDMA/UMTS and HSPDA

For more information about Agilent's solutions, visit our Web site at: www.agilent.com

For more information about the Agilent E6474A Wireless Network Optimization Platform, go to: www.agilent.com/find/E6474A

This information is subject to change without notice.

© Agilent Technologies, Inc. 2005

Printed in UK May 16, 2005

5988-7947EN



Agilent Technologies