

Agilent N2X



Best in Class Testing of Transport Networks

Unmatched service performance insight over transport networks with Agilent N2X

Agilent N2X is the industry's most comprehensive test solution for testing the development and deployment of network services for converging network infrastructures. Service providers, network equipment manufacturers (NEMs), and component manufacturers can verify service attributes of entire networks end-to-end, while also isolating problems down to individual networking devices and subsystems.

Transport network infrastructure is evolving to new technologies, architectures and topologies to more efficiently, and flexibly deliver data services. A new generation of multiservices transport devices, which incorporate Ethernet switching and routing as well as Sonet/SDH switching are emerging to power these networks. The interdependence of Sonet/SDH switching on performance of end-to-end Layer 2 services like Ethernet is becoming increasingly important.

The Agilent N2X solution is the industry's first to combine leading-edge data services testing with carrier-grade transport infrastructure testing and emulation. The N2X solution set incorporates the strength of the OmniBER XM, RouterTester 900 and SANTester to comprehensively characterize end-to-end service quality under realistic transport network operating conditions. Including the ability to stress both the transport network data and control planes, the Agilent N2X offers unmatched insight into carrier service performance.

The N2X offers unmatched insight into carrier service performance over transport networks:

- Industry's leading multi-protocol emulation and traffic generation environment
- Multi-channel Sonet/SDH generation and measurements
- Extensive interface range (from Sonet/SDH, 10/100 Ethernet to OC-768c)
- Patented real-time measurements
- Powered through a versatile GUI
- Fully featured API



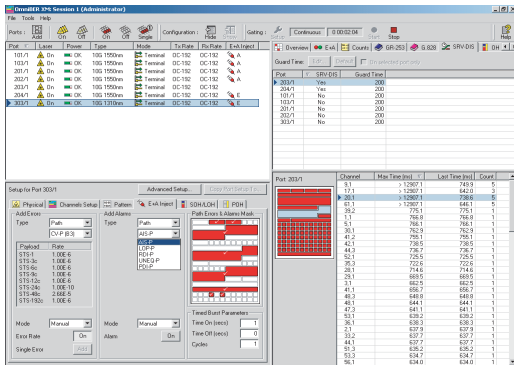
Agilent Technologies

Best in Class Testing of Transport Networks

Scalability: Test extreme network conditions

The scalable performance of underlying carrier-grade transport devices is critical in the network's ability to efficiently deliver data services such as Ethernet and Fiber Channel. Only Agilent N2X with the industry's most scalable multi-channel SONET/SDH and layer 2/3 traffic and protocol generation and measurement can emulate realistic network conditions to test the ultimate performance of a device's ability to deliver data services.

- Realistic network stressing (errors, alarms, mixed payloads) across multiple SONET/SDH channels (both STS/AU high-level and VT/TU low-level channels)
- Simultaneous APS measurement of all SONET/SDH channels
- Industry highest Ethernet stream scalability



Comprehensive network stressing and measurement on one screen

Versatility : Control and Data Plane Testing

The emerging standardization of the intelligent control plane to Generalized Multi-Protocol Label Switching (or GMPLS) will help service provider's lower costs, reduce operational complexity, and more efficiently provision new revenue-generating services. Agilent N2X provides comprehensive test capability to test the performance of the control plane, as well as the interaction with the (traffic carrying) data plane which is critical to ensuring the correct operation of these new services.

- GMPLS optical signaling emulation
- SONET/SDH control plane stressing
- Data plane traffic generation and verification
- All in one solution set

Innovation: Industry leading service measurements

N2X builds upon Agilent's long established reputation of innovation through continuous industry leadership and more recently through a series of new Ethernet service testing techniques. With a patented Ethernet Service Disruption testing technique, Agilent N2X can provide unparalleled insight into Ethernet service delivery under a range of transport network volatility conditions. Furthermore, through the use of a proprietary Ethernet instrumented test payload, Agilent N2X used with the companion OmniBER OTN product, is able to make Ethernet frame sequence and "packet BER" measurements to gain further insight into the performance of next generation transport devices.

Companion N2X Products

The Agilent OmniBER OTN is the market leader for design conformance testing of next generation SONET equipment and components. As a companion to N2X, the combined solution provides best in class testing across the entire development life cycle of transport infrastructure equipment.

Agilent N2X



For more information, please visit:

www.agilent.com/comms/N2X

To speak with an Agilent representative, call your local office:

United States:
1-800-452-4844

Latin America:
(305) 269-7500

Canada:
1-877-894-4414

Japan:
(81) 426-56-7832

Europe:
United Kingdom
07004 666666
Amsterdam
(31 20) 547-2323

Asia Pacific:
(852) 3197-7777

Australia:
1-800-629-485

