

N2X IPv6 Solution

The industry's most comprehensive solution for evaluating IPv6 implementations.

Agilent N2X is the industry's most comprehensive test solution for testing the development and deployment of network services for converging network infrastructures.

The N2X IPv6 Solution provides service providers and equipment manufacturers a complete solution for characterizing IPv6 network implementations. With the industry's highest scalability, broadest conformance test coverage, and full support for tunneling protocols like 6PE and VPNv6, N2X reduces the overall test-bed investment and time-to-transition.

NetworkTester, the companion product to N2X, can verify the performance of application traffic delivered over IPv6 networks. Through the unique Agilent application-mix test methods, real-world blends of traffic are used to truly characterize application performance.

As enterprises and operators begin deployment of IPv6 enabled devices, they will need to co-exist with traditional IPv4 and MPLS networks. This will require support for dual-stack operation, various tunneling protocol implementations and enhanced security services. Conformance to transition mechanisms RFCs and security mechanisms are critical in ensuring a smooth path to interoperability and reducing time to service.

Agilent N2X provides the most comprehensive IPv6 solution to ensure test realism, scalability and faster time to insight:

- Highest absolute routing protocol scalability and simultaneous generation of tunnelled IPv6/IPv4 traffic for realistic performance characterisation.
- Industry's leading IPv6 conformance test coverage including security suites, validating IPv6-based encryption and authentication mechanisms.
- Powerful GUI combines all IPv6 routing performance testing into a single control and analysis point, delivering greater time-to-insight.
- With the complementary NetworkTester solution, the ability to emulate real-world mixes of application traffic to validate the ultimate performance of IPv6 deployments.



Agilent N2X



Agilent NetworkTester



Scalability

The scalable performance of IPv6 network implementations is critical to the profitable transition and deployment of the services they enable. With the industry's highest absolute routing protocol scalability and flexible IPv6 traffic generation, N2X provides the most scalable emulation engine to simulate converged networks.

Faster time to insight

The Agilent N2X powerful emulation environment and easy-to-use GUI combines all IPv6 routing performance testing into a single control and analysis point, delivering greater time-to-insight. N2X also provides the industry's broadest IPv6 conformance test coverage including security suites validating IPv6-based encryption and authentication mechanisms.

The N2X IPv6 protocol conformance suite operates within a unique Test Manager with industry leading usability and reporting features. Rapid result diagnosis and problem isolation saves time and effort during protocol development and validation.

The transition to IPv6 creates new challenges for operators and manufacturers. By using its integrated support for IPv6 traffic forwarding, routing and tunneling technologies, N2X users can be sure that these mechanisms operate correctly.

Test Realism

N2X provides unparalleled test realism to verify the ultimate performance of IPv6 network implementations. With comprehensive coverage of all IPv6 routing protocols (BGP4+, OSPFv3, IS-ISv6, RIPng) and simultaneous generation of IPv4, IPv6 and tunneled IPv6/IPv4 traffic, N2X provides the industry's most flexible multi-protocol emulation that enables realistic test simulation of mixed IPv4/IPv6 networks.

Along with characterizing the underlying IPv6 network infrastructure, the N2X solution also comprises of a companion product, Network Tester, which is used to characterise the ultimate performance of IPv6 networks, the end-to-end application performance.

Network Tester's Application Mix test plans generate multiple transactions between real clients and servers from multiple protocols such as HTTP, H.323, SIP, SMTP and POP3. This is all based on traffic distributions and parameters modeled from actual network statistics.

For more information, please visit:

www.agilent.com/comms/N2X

To speak with an Agilent representative, call your local office:

United States:
1-800-452-4844

Canada:
1-877-894-4414

Europe:
United Kingdom
07004 666666

Amsterdam:
(31 20) 547-2323

Latin America:
(305) 269-7500

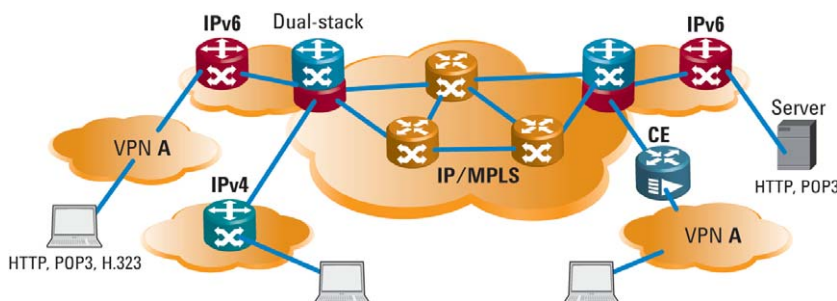
Japan:
(81) 426-56-7832

Asia Pacific:
(852) 3197-7777

Australia:
1-800-629-485

This information is subject to change without notice

Copyright © Agilent Technologies, Inc. 2005
Printed in U.S December 2, 2005
5989-4485EN



Multi-service IP/MPLS network utilizing IPv4 and IPv6 addressing