

Agilent N2X QuickTest

Simplifying your complex test scenarios

Agilent N2X is the industry's most comprehensive test solution for testing the development and deployment of network services and converging network infrastructures.

The N2X QuickTest library is a comprehensive set of tools and scripts supported by a self-explaining GUI that simplify and automate the testing of networks and devices such as routers, switches, BNGs, Access Nodes and firewalls.

Each N2X QuickTest automates commonly used functional and performance test scenarios based on The Agilent Journal of Test Methodologies. The QuickTest library includes over a hundred fully qualified Tcl/Tk test scripts that cover test areas such as:

- Forwarding Performance (including RFC 2544 Performance Benchmarking of Ethernet Protocol Equipment, and RFC 2889 Benchmarking of LAN Switching Devices)
- Routing Stability and Scalability
- IPv6
- MPLS Traffic Engineering
- VPNs
- Denial of Service

In addition there is a library of scripts for simplifying the configuration of common test tasks such as creating Ixmx traffic, generating oscillating loads, creating packet bursts, and performing jitter and latency analysis of captured traffic.

Easy to interpret GUI

Using the QuickTest browser's intuitive graphical user interface (GUI) you can easily browse through the extensive library with its self-explaining graphics. This makes the N2X QuickTest suite easy to use and doesn't require a detailed technical background.

Automated Test Reports

All test scripts automatically generate detailed and self-explaining test reports and support both Text and Comma Separated-Value (CSV) formats. Many scripts also create graphs of the key results.

Yours for FREE!

The N2X QuickTest suite is available to all customers purchasing a N2X system at no extra cost. To run the test cases in the library, you will need the relevant protocol emulation software licenses, and one or more test modules with a suitable number of ports.

To ensure your N2X QuickTest library is maintained and supported, you will need to have an active Software Support Agreement (SSA).



The Agilent N2X Test Solution



Agilent Technologies

Agilent N2X QuickTest

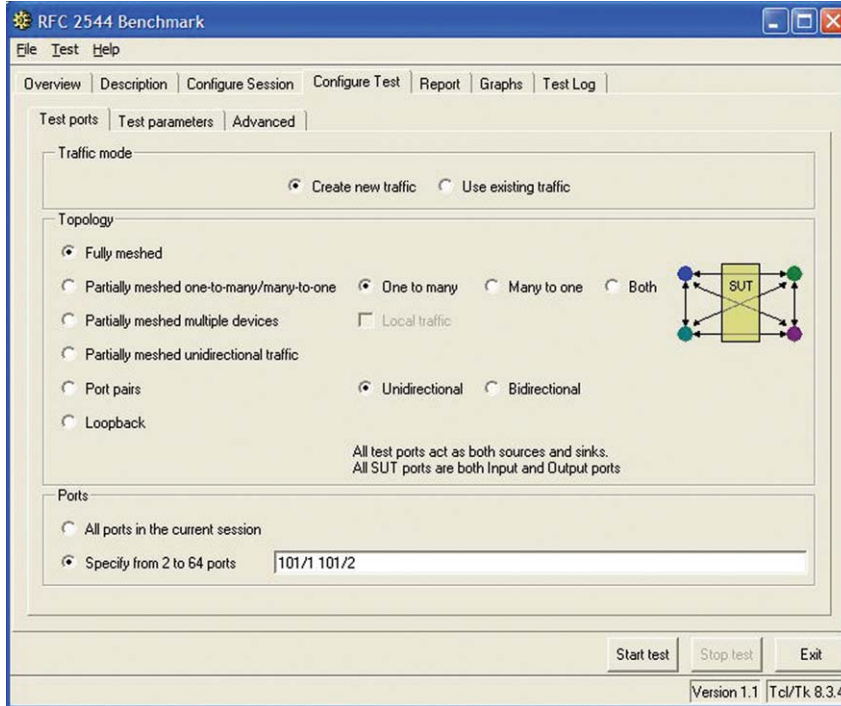


Figure 1: The user-friendly GUI allows you to quickly setup a test scenario

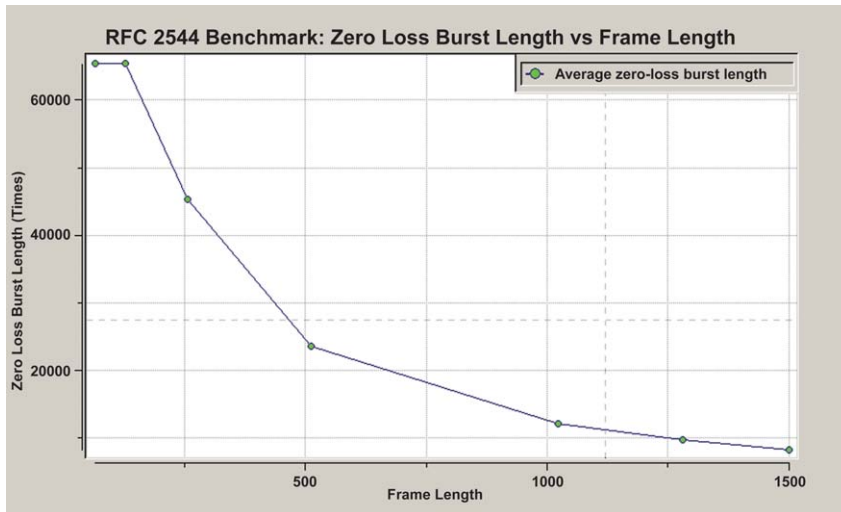


Figure 2: Easy to understand graphed test results



The Agilent N2X Test Solution

For more information, please visit:
www.agilent.com/find/N2X

To speak with an Agilent representative, call your local office:

United States:
1-800-452-4844

Canada:
1-877-894-4414

Europe:
United Kingdom
07004 666666

Amsterdam:
(31 20) 547-2323

Latin America:
(305) 269-7500

Japan:
(81) 426-56-7832

Asia Pacific:
(852) 3197-7777

Australia:
1-800-629-485

This information is subject to change without notice

Copyright © Agilent Technologies, Inc. 2006
 Printed in U.S October 27, 2006
 5989-5781EN