



Agilent PicoTREC

Topography and Recognition Imaging System for Atomic Force Microscopy

Data Sheet

Features and Benefits

- Identifies molecules and regions involved in binding events
- Screens compounds/molecules by binding interactions
- Generates surface adhesion profiles
- Improves speed and precision of results
- Expedites force-distance spectroscopy studies
- Conducts simultaneous topography and recognition imaging
- Performs label-less detection of molecular binding events



Figure 1. PicoTREC Topography and Recognition Imaging System.

Overview

PicoTREC from Agilent is the first atomic force microscope (AFM) option to give researchers the ability to detect and map molecular binding events while simultaneously generating topographic images in real time.

This molecular recognition tool has been designed for use with Agilent's patented MAC Mode on the 5500 AFM and 5500 inverted light microscope (ILM) systems. The 5500 AFM provides a wealth of unique technological features, including patented top-down scanning, ultra-precision temperature control, and industry-leading environmental control. Agilent's 5500 ILM system combines the power of this high-resolution AFM with the direct optical viewing capability of an inverted optical microscope.

With PicoTREC, researchers can quickly identify molecules that are engaged in molecular binding events. Using PicoTREC and AFM tips that have been modified with specific biochemistries, researchers can rapidly identify areas on samples that are engaged in molecular binding events and generate a molecular

recognition map along with a MAC Mode AFM topography image of the sample. Alternatively, the information that is generated with PicoTREC and unmodified AFM tips can often be correlated to adhesion or other nonspecific interactions between the AFM tip and the sample.

PicoTREC's specialized hardware and electronics enable many advanced AFM spectroscopy applications. Force-distance spectroscopy measurements, molecular manipulations, and other AFM applications can be performed easier, faster, and with much greater confidence and precision than ever before. PicoTREC facilitates force-distance spectroscopy studies by pinpointing areas of molecular interaction. In situations where quantitative information is not required, PicoTREC can eliminate the need for slow, tedious force-distance spectroscopy experiments.

PicoTREC received R&D Magazine's R&D 100 Award®, recognizing it as one of the 100 most significant technological innovations in 2004. A breakthrough tool for AFM applications, PicoTREC allows researchers to pursue new avenues of discovery in nanotechnology.



Applications

Explore the dynamic properties of biological processes such as antibody-antigen, ligand-receptor, drug-receptor, DNA-protein, and DNA-DNA interactions. Compare topography images to molecular recognition maps and adhesion patterns. The possibilities are endless!

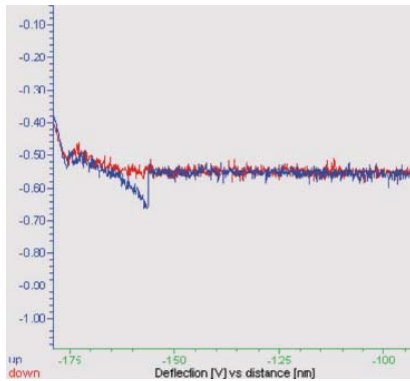


Figure 2. Force-distance profile of a single biotin-avidin unbinding event resulting from the withdrawal of a biotinylated AFM tip from an avidin-coated surface. Acquired on an Agilent 5500 AFM. Force of unbinding (z axis) versus distance (x axis). [CONFIRM AXIS LABELS]

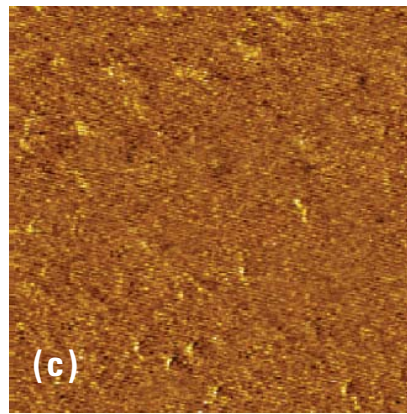
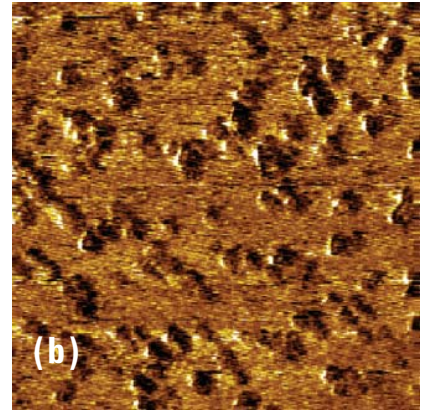
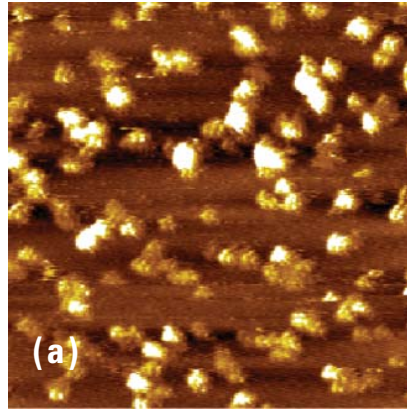


Figure 3. Avidin topography (a) and biotin-avidin recognition (b and c) images of avidin molecules under physiological conditions. Acquired on an Agilent 5500 AFM equipped with PicoTREC, MAC Mode, and a biotinylated AFM tip. (a) is a topography image of avidin molecules represented as white areas and (b) molecular recognition events as revealed in dark areas resulting from specific biotin-avidin interactions. (c) The dark areas are absent because the specific molecular interactions were blocked by the addition of streptavidin. The blocking experiment demonstrates the specificity of the molecular interactions. Scan size: $1\mu\text{m} \times 1\mu\text{m}$.

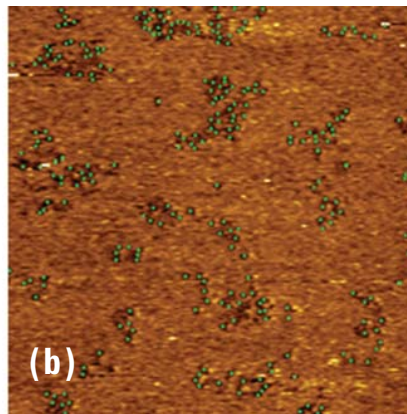
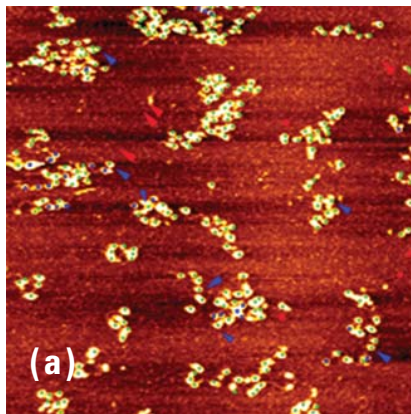


Figure 4. Accuracy and reproducibility using PicoTREC- Anti His3 on AFM and Chromatin on glutaraldehyde mica.

When compared to force volume mapping, PicoTREC can repeat the experiment in a matter of minutes. Image (a) Blue indicates misses and Red indicates false hits. On image (b) green indicates hits. There was five minutes between scans and number of hits went down on the rescan (96% to 92%) and the false positive rate was 2.8%.

Images courtesy of Dr Stuart Lindsay based on results generated in his lab by Dr Hongda Wang at ASU.

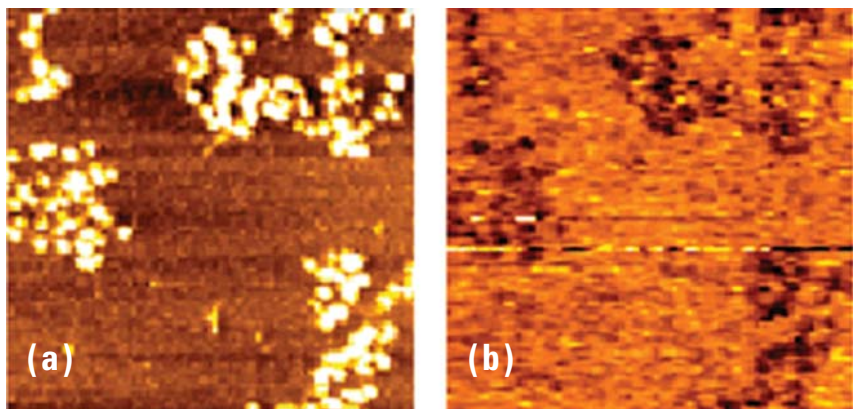


Figure 5. PicoTREC Topography and RECOgnition image of MMTV chromatin (DNA and histone protein complex) covalently attached to mica. (a) Topography image is individual chromatin molecules. (b) RECOgnition image of single molecule binding events between antihistone antibody, which has been attached to the AFM tip, and histone molecules on the surface. Scan size 500 nm x 500 nm.

Images courtesy of Dr Stuart Lindsay based on results generated in his lab by Dr Hongda Wang at ASU

Specifications

Compatibility: Requires Agilent MAC Mode

Compatible with the Agilent 5500 AFM and 5500 ILM

Applicable to specific and nonspecific molecular interactions (e.g., biomolecular recognition, ligand-receptor interactions, single-molecule binding events, adhesion)

Dimensions: 10cm (H) x 25cm (W) x 24cm (D), 1 kg

Power: Supplied by PicoScan® controller

AFM Instrumentation from Agilent Technologies

Agilent Technologies offers high-precision, modular AFM solutions for research, industry, and education. Exceptional worldwide support is provided by experienced application scientists and technical service personnel. Agilent's leading-edge R&D laboratories ensure the continued, timely introduction and optimization of innovative, easy-to-use AFM technologies.



R&D 100 Award is a registered trademark of R&D Magazine.

www.agilent.com/find/afm

www.agilent.com

For more information on Agilent Technologies' products, applications or services, please contact your local Agilent office. The complete list is available at:

www.agilent.com/find/contactus

Americas

Canada	(877) 894-4414
Latin America	305 269 7500
United States	(800) 829-4444

Asia Pacific

Australia	1 800 629 485
China	800 810 0189
Hong Kong	800 938 693
India	1 800 112 929
Japan	81 426 56 7832
Korea	080 769 0800
Malaysia	1 800 888 848
Singapore	1 800 375 8100
Taiwan	0800 047 866
Thailand	1 800 226 008

Europe

Austria	0820 87 44 11
Belgium	32 (0) 2 404 93 40
Denmark	45 70 13 15 15
Finland	358 (0) 10 855 2100
France	0825 010 700
Germany	01805 24 6333* *0.14€/minute
Ireland	1890 924 204
Italy	39 02 92 60 8484
Netherlands	31 (0) 20 547 2111
Spain	34 (91) 631 3300
Sweden	0200-88 22 55
Switzerland (French)	44 (21) 8113811(Opt 2)
Switzerland (German)	0800 80 53 53 (Opt 1)
United Kingdom	44 (0) 7004 666666
Other European Countries:	www.agilent.com/find/contactus

Revised: March 23, 2007

Product specifications and descriptions in this document subject to change without notice.

© Agilent Technologies, Inc. 2007
Printed in USA, April 27, 2007
5989-6706EN