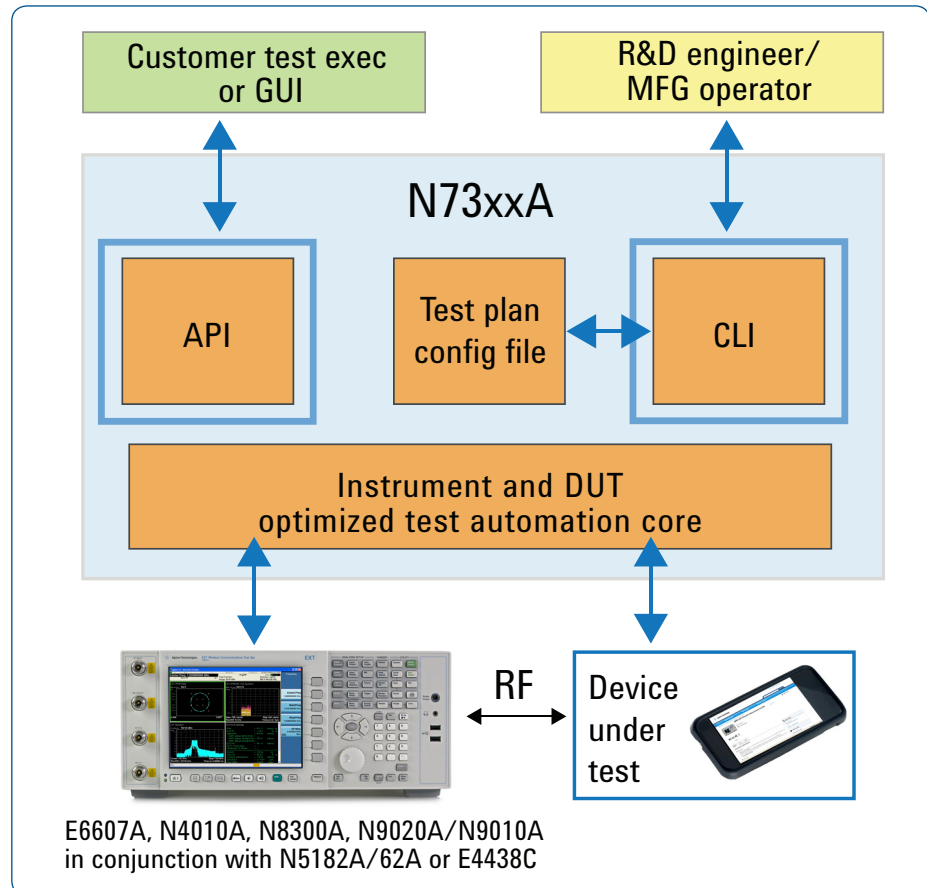




# Agilent N7300 Series Chipset Software

## Technical Overview

Chipset automation software for WiMAX™, WLAN (WiFi),  
*Bluetooth*®, and Femtocell device and module test



- Quick and easy optimization of WiMAX, WLAN, *Bluetooth*, and Femtocell devices and module testing
- Simple and reliable setup for fast, accurate, and repeatable measurements through your choice of CLI or API
- Unique version for each chipset provider's device—with new chipsets continually being added
- Control measurement parameters for calibration and verification
- Choose what to do with the results/logs



**Agilent Technologies**

## N7300 Series Software: CLI and API User Interfaces

Designed for use with the N4010A wireless connectivity test set, E6607A EXT wireless communications test set, N8300A wireless networking test set, N9020A MXA or N9010A EXA signal analyzer in conjunction with the N5182A/62A MXG or E4438C ESG vector signal generator, the N7300 Series chipset software performs fast and accurate wireless production test for today's—and future—wireless devices and modules.

The two main use models for the N7300 Series software are:

1. Use the command line interface (CLI) application for stand-alone device calibration and verification. A simple test plan configuration can be implemented using the setup.ini file.

```

N7300A1.exe
136. TX Verification -20.0 dBm : 0.474 s
TX Verification Band 2 Freq 3405000 kHz cleardown : 0.000 s
TX Verification Band 2 Freq 3500000 kHz setup : 2.506 s
137. TX Verification 23.0 dBm : 0.501 s
138. TX Verification 0.0 dBm : 0.360 s
139. TX Verification -20.0 dBm : 0.479 s
TX Verification Band 2 Freq 3500000 kHz cleardown : 0.000 s
TX Verification Band 2 Freq 3595000 kHz setup : 2.515 s
140. TX Verification 23.0 dBm : 0.504 s
141. TX Verification 0.0 dBm : 0.491 s
142. TX Verification -20.0 dBm : 0.345 s
TX Verification Band 2 Freq 3595000 kHz cleardown : 0.000 s
Test plan cleardown : 0.003 s

*****
**** PASSED ****
*****

-----
RUN TESTS

DUT serial number <Q to set parameters>: _
  
```

Figure 1. The test plan completion results from running N7300A1.exe

2. Interface to the N7300 Series software's application programming interface (API) via the user's own test executive.

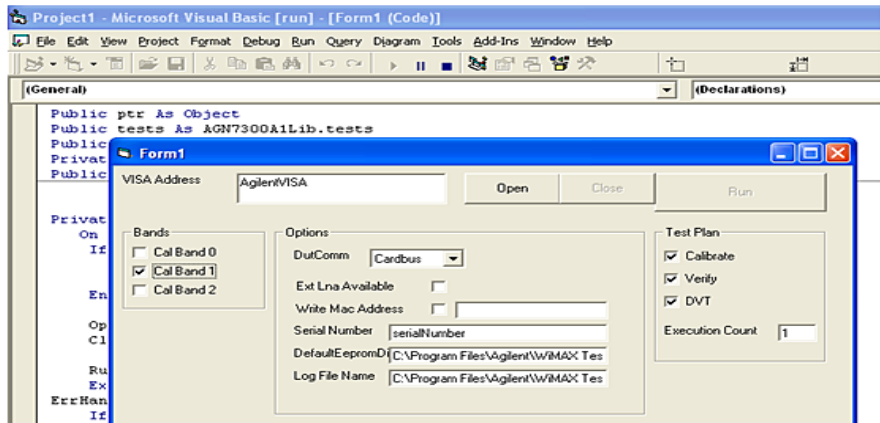


Figure 2. N7300 Series software API system integration into customer's test executives

The N7300 Series software's high-level API allows:

- Programmatic configuration of the calibration/verification test plan setup
- Control of the N7300 Series software
- Extraction of data and results to databases/logs for further analysis

In both use models, by providing an easy way of combining instrument and DUT control, Agilent is shortening the test development process and promoting the fastest time-to-market. This is achieved by working with the chipset vendor on optimizing the calibration routine and test plan automation, removing the need for the end user to do this.

## Ordering Information

The N7300 Series chipset software provides fixed, 3-month, or transportable licenses for the following chipsets. Licenses can be ordered at the time of instrument purchase or at a later date. To assist with the test software development, an Installation Guide, User/Reference Guide, and COM (Microsoft's® Component Object Model) Help are provided for each licensed software product. N7399B silicon vendor encrypted waveform licenses are designed to playback N7300 Series waveforms on one box testers or signal sources. N7399B licenses are the default for all WiMAX and Femtocell N73xxA purchases and will be automatically added to your order.

Fixed, perpetual license	Fixed, 3-month license	Transportable, perpetual license
N7300A-1 chipset software for Beceem BCS200/BCSM250/BCS5200		
N7300A-1FP	N7300A-1F3	N7300A-1TP
N7300A-2 chipset software for Beceem BCSM350/BSCM352/BCS5350		
N7300A-2FP	N7300A-2F3	N7300A-2TP
N7302A-1 chipset software for SQN1130 and MAX283x		
N7302A-1FP	N7302A-1F3	N7302A-1TP
N7302A-2 chipset software for SQN1130 and PM880x/885x		
N7302A-2FP	N7302A-2F3	N7302A-2TP
N7302A-3 chipset software for SQN1130 and SQN1140/5		
N7302A-3FP	N7302A-3F3	N7302A-3TP
N7302A-5 chipset software for SQN12x0		
N7302A-5FP	N7302A-5F3	N7302A-5TP
N7303A-1 chipset software for CSR9000 series, CSR6000 series, and BlueCore7		
N7303A-1FP	N7303A-1F3	N7303A-1TP
N7303A-1NP (for N4010A only)	N7303A-1N3 (for N4010A only)	
N7304A-1 chipset software for ALT2150 and MAX2839		
N7304A-1FP	N7304A-1F3	N7304A-1TP
N7306A-1 chipset software for Broadcom BCM4325		
N7306A-1FP	N7306A-1F3	N7306A-1TP
N7306A-3 chipset software for Broadcom BCM4329		
N7306A-3FP	N7306A-3F3	N7306A-3TP
N7307A-1 chipset software for TI WL1271/3		
N7307A-1FP	N7307A-1F3	N7307A-1TP
N7309A-1 chipset software for Percello PRC6000 and MAX2547/99		
N7309A-1FP	N7309A-1F3	N7309A-1TP
N7309A-2 chipset software for Percello PRC6000 and ADI RFIC (AD9936/ADF4602)		
N7309A-2FP	N7309A-2F3	N7309A-2TP
N7311A-1 chipset software for Atheros AR6003		
N7311A-1FP	N7311A-1F3	N7311A-1TP
N7311A-1NP (for N4010A only)	N7311A-1N3 (for N4010A only)	

*The software can be downloaded at [www.agilent.com/find/n7300](http://www.agilent.com/find/n7300). The password provided with the license redemption certificate is required to download the software.*

## Product Configuration

Agilent N7300 Series chipset software are cross-instrument solutions that are supported on the Agilent N9020A MXA and N9010A EXA signal analyzers, N5182A/62A MXG and E4438C ESG signal sources, and the E6607A EXT, N4010A, and N8300A one box test set hardware.

Technologies supported	Chipset vendor	Model	Instruments supported						
			One box testers			Signal analyzers		Signal sources	
			N4010A*	N8300A	E6607A	N9020A	N9010A	E4438C	N5162A/82A
WiMAX 802.16	Beceem	N7300A-1	—	√	—	√	√	√	√
		N7300A-2	—	√	√	√	√	√	√
	Sequans	N7302A-1							
		N7302A-2	—	—	—	√	√	√	√
		N7302A-3 N7302A-5							
Altair	N7304A-1	—	√	—	√	√	√	√	
WLAN 802.11/ Bluetooth	CSR	N7303A-1	√	√	—	—	—	—	—
	Broadcom	N7306A-1	√	√	—	—	—	—	—
		N7306A-3							
	Texas Instruments	N7307A-1	√	√	—	—	—	—	—
	Qualcomm Atheros	N7311A-1	√	√	—	—	—	—	—
Femtocell	Percello	N7309A-1	—	—	—	√	√	√	√
		N7309A-2							

\* N4010A supports fixed perpetual and 3-month licensing options and does not support transportable licensing. Other instruments support fixed perpetual, 3-month, and transportable perpetual licensing options.

## Related Literature

*N4010A Test Solutions*, brochure, literature number 5989-4150EN

*EXT Wireless Communications Test Set*, brochure, literature number 5990-7156EN

*N9020A MXA X-Series Signal Analyzer*, brochure, literature number 5989-5047EN

*N9010A EXA Signal Analyzer*, brochure, literature number 5989-6527EN

*MXG Signal Generators*, brochure, literature number 5989-5074EN

*E4438C ESG Vector Signal Generator*, brochure, literature number 5988-3935EN



### Agilent Email Updates

[www.agilent.com/find/emailupdates](http://www.agilent.com/find/emailupdates)

Get the latest information on the products and applications you select.



Agilent Advantage Services is committed to your success throughout your equipment's lifetime. We share measurement and service expertise to help you create the products that change our world. To keep you competitive, we continually invest in tools and processes that speed up calibration and repair, reduce your cost of ownership, and move us ahead of your development curve.

[www.agilent.com/find/advantageservices](http://www.agilent.com/find/advantageservices)



[www.agilent.com/quality](http://www.agilent.com/quality)

*iMAX, Mobile WiMAX, WiMAX Forum, the WiMAX Forum logo, WiMAX Forum Certified, and the WiMAX Forum Certified logo are US trademarks of the WiMAX Forum.*

*Bluetooth and the Bluetooth logos are trademarks owned by Bluetooth SIG, Inc., U.S.A. and licensed to Agilent Technologies, Inc.*

*Microsoft is a trademark or registered trademark of Microsoft Corporation in the United States and/or other countries.*

[www.agilent.com](http://www.agilent.com)  
[www.agilent.com/find/n7300a](http://www.agilent.com/find/n7300a)  
[www.agilent.com/find/n8300a](http://www.agilent.com/find/n8300a)

For more information on Agilent Technologies' products, applications or services, please contact your local Agilent office. The complete list is available at:

[www.agilent.com/find/contactus](http://www.agilent.com/find/contactus)

#### Americas

Canada	(877) 894 4414
Brazil	(11) 4197 3500
Mexico	01800 5064 800
United States	(800) 829 4444

#### Asia Pacific

Australia	1 800 629 485
China	800 810 0189
Hong Kong	800 938 693
India	1 800 112 929
Japan	0120 (421) 345
Korea	080 769 0800
Malaysia	1 800 888 848
Singapore	1 800 375 8100
Taiwan	0800 047 866
Other AP Countries	(65) 375 8100

#### Europe & Middle East

Belgium	32 (0) 2 404 93 40
Denmark	45 70 13 15 15
Finland	358 (0) 10 855 2100
France	0825 010 700*
	*0.125 €/minute
Germany	49 (0) 7031 464 6333
Ireland	1890 924 204
Israel	972-3-9288-504/544
Italy	39 02 92 60 8484
Netherlands	31 (0) 20 547 2111
Spain	34 (91) 631 3300
Sweden	0200-88 22 55
United Kingdom	44 (0) 131 452 0200

*For other unlisted countries:*

[www.agilent.com/find/contactus](http://www.agilent.com/find/contactus)

Revised: June 8, 2011

Product specifications and descriptions in this document subject to change without notice.

© Agilent Technologies, Inc. 2009-2011  
Published in USA, September 9, 2011  
5989-7920EN



**Agilent Technologies**